

**PINOT NOIR**  
**AROUND THE WORLD**

**NORTH HANTS WINE SOCIETY**  
**September 2023**

PINOT NOIR

OR

**'SEX IN A GLASS'**

## ***QUESTIONS WE MIGHT DISCUSS -***

- **WHY ARE WE TOLD PINOT NOIR IS SUCH A DIFFICULT A GRAPE?**
- **WHERE ARE THE BEST PINOT NOIR GRAPES GROWN?**
- **WHAT STYLES OF WINES ARE MADE FROM PINOT NOIR?**
- **DOES IT CHANGE CHARACTER AROUND THE WORLD?**
- **AND, IF SO, WHY?**

# **PINOT NOIR**

- **From The FRENCH For PINE and BLACK**
- **PINE From The Shape of TIGHTLY CLUSTERED BUNCH of GRAPES**
- **VERY OLD VARIETY maybe 2500+ years old**



# PINOT NOIR

- FROM THE FRENCH FOR PINE AND BLACK
- PINE FROM THE TIGHTLY CLUSTERED BUNCHED OF GRAPES
- VERY OLD VARIETY maybe 2000+ years old
  
- **A COLDER CLIMATE GRAPE**
- **ASSOCIATED WITH BURGUNDY IN CENTRAL FRANCE**
- **ALSO WITH CHAMPAGNE AND CHAMPAGNE STYLE WINES**
  
- **PINOT NOIR = SPATBURGUNDER in GERMANY**  
    **= PINOT NERO in ITALY**  
    **= BLAUBURGUNDER in AUSTRIA &**  
    **SWITZERLAND and Parts of Germany**

# **BIRD IN HAND, ADELAIDE HILLS 2022 12.5%**

- **100 % PINOT NOIR**
- **HARVESTED at NIGHT – MAXIMISE FRESHNESS & FLAVOUR**
- **DESTEMMED, CRUSHED – MINIMUM TIME on SKINS**
- **INDIVIDUAL BATCH PROCESSING until BLENDING**
- **MAXIMUM FLEXIBILITY for Winemaker Kym Milne MW**
- **‘FLORAL, STRAWBERRIES, CITRUS BLOSSOM**
- **RED BERRY FRUIT, DELICATE BREAD, REFRESHING CLEAN FINISH’**
- **Mathew DUKE’S Top 100 Australian Wines**

# **MY 'KEY' PINOT AREAS AROUND THE WORLD**

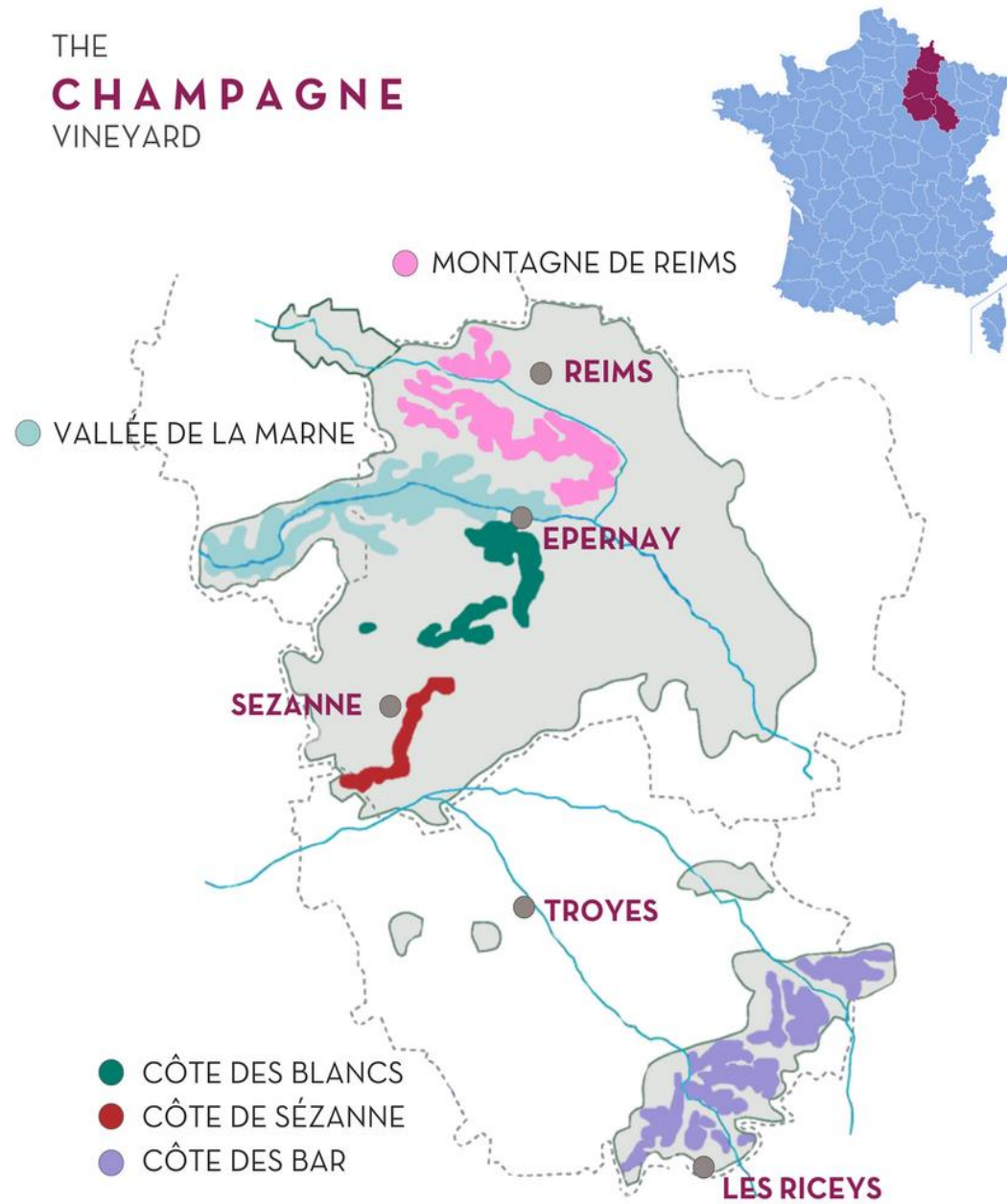
- **BURGUNDY** and **CHAMPAGNE** in FRANCE
- **AHR, WESTERN RHEINGAU & BADEN** in GERMANY
- **DEALU MARE** in ROMANIA
- USA - **WILLAMETTE VALLEY** in OREGON, **CARNEROS, CENTRAL COAST** and **RUSSIAN RIVER VALLEY** in SONOMA, CALIFORNIA
- **ELGIN AND WALKER BAY** in SOUTH AFRICA
- **MORNINGTOWN PENINSULA, GEELONG, ADELAIDE HILLS, YARRA VALLEY** and **TASMANIA** in AUSTRALIA
- **CENTRAL OTAGO, MARTINBOROUGH & MARLBOROUGH** in NZ
- **PATAGONIA** and **Good Value Pinots** in CHILE



# SO WHAT ARE WE TASTING .....

- |               |                                   |  |
|---------------|-----------------------------------|--|
| • Romania     | Cramele Recas                     | Recas  |
| • Chile       | Valle Frio                        | Maule Valley   |
| • USA         | Lemelson                          | Willamette Valley, Oregon  |
| • France      | Les Robardelles<br>Blanc de Noirs | Volnay, Cote D'Or, Burgundy<br>Cotes des Bar, Champagne            |
| • Australia   | Wakefield Wines<br>Bird in Hand   | Adelaide Hills, South Australia<br>Adelaide Hills, South Australia |
| • New Zealand | Craggy Range<br>Wild Earth        | Martinborough<br>Central Otago                                     |
| • Argentina   | Schroeder Family                  | Patagonia  |

THE  
**CHAMPAGNE**  
VINEYARD



# **BLANC De NOIR CHAMPAGNE MA NV**

- **WAITROSE own label made by ALEXANDER BONNET in the AUBE**
- **Les Riceys - on borders of Champagne and Burgundy**
- **Kimmeridge Limestone in the COTES DES BAR**
- **100% PINOT NOIR**
- **TRADITIONAL CHAMPAGNE MAKING**
- **36 Months on the LEES**
- **'BEST SUPERMARKET CHAMPAGNE 2021'**

# CHAMPAGNE PRODUCER CODES

- **NM – Négociant-Manipulant** –large Champagne houses who buy grapes from growers then make the Champagne under their own brand.
- **RM – Récoltant-Manipulant** –both grown and made by same producer, Also known as a **Grower Champagne**.
- **CM – Coopérative-Manipulant** – small growers blend their grapes collectively and make wine under one or more brands.
- **RC – Récoltant-Coopérateur** –a grower provides grapes to a Coopérative-Manipulant who make the wine on the grower's behalf under the grower's own brand but without their involvement.
- **SR – Société des Récoltants** – a small number of growers share the same winery but make separate wines under their own labels..
- **ND – Négociant Distributeur** – A company selling Champagne it did not make.
- **MA – Marque d' Acheteur** – A brand name owned by the purchaser, such as a restaurant, supermarket or wine merchant.



# **GRAPE STRUCTURE PRONE TO RISKS**

- **TIGHTLY PACKED GRAPES = EASILY TRANSMITTED DISEASE**
- **ALSO MORE SUSCEPTIBLE TO ROT**
- **VERY THIN SKINS = INSECT, PEST, BIRD DAMAGE + Splitting**

# GRAPE STRUCTURE PRONE TO RISKS

- TIGHTLY PACKED GRAPES = EASILY TRANSMITTED DISEASE
- ALSO MORE SUSCEPTIBLE TO ROT
- VERY THIN SKINS = INSECT, PEST & BIRD DAMAGE
- **BUDS EARLY = PRONE TO FROST**
- **LOW PHENOLIC COMPOUNDS**  
= **UNEVEN & UNPREDICTABLE AGING**



# PRONE TO RISKS

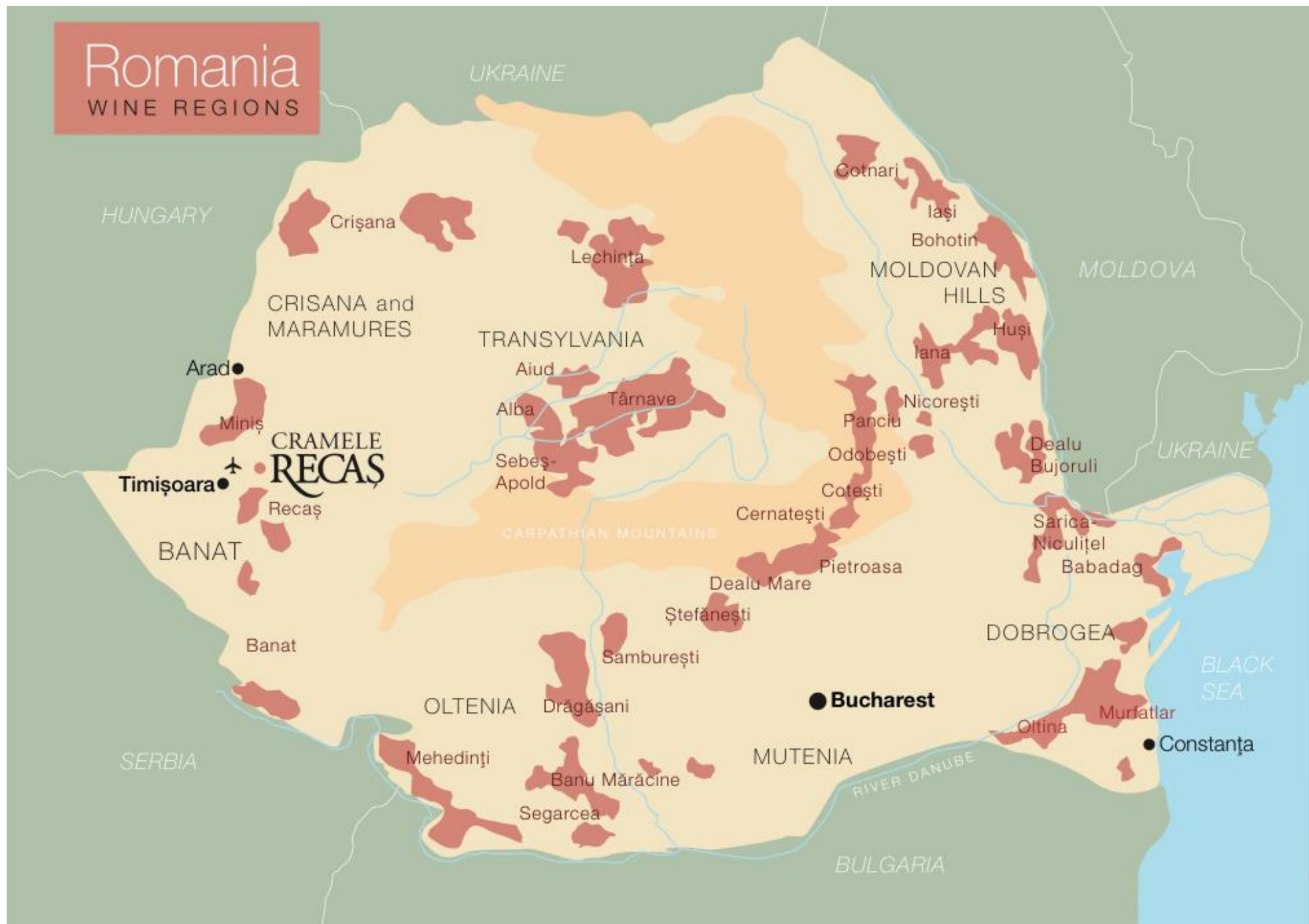
- **TIGHTLY PACKED GRAPES = EASILY TRANSMITTED DISEASE**
- **ALSO MORE SUSCEPTIBLE TO ROT**
- **VERY THIN SKINS = INSECT, PEST & BIRD DAMAGE - Splitting**
- **BUDS EARLY = PRONE TO FROST**
- **LOW PHENOLIC COMPOUNDS = UNEVEN & UNPREDICTABLE AGING**
  
- **SELECTION of ROOT STOCK and CLONES CRITICAL**
- **NEEDS DILIGENT CANOPY MANAGEMENT**
- **MORE CAREFUL VITICULTURE**





# Romania

WINE REGIONS



**INCANTA PINOT NOIR 2022  
CRAMELE RECAS, ROMANIA**

**12.5%**

- **INCANTA means to ENCHANT in Romanian**
- **HOT SUMMERS & COLD WINTERS**
- **MACHINE HARVESTED**
- **COOL FERMENTATION**
- **2 MONTHS WITH FRENCH OAK STAVES**
- **Aimed at SUPER MARKET BUYERS**







# INCANTA PINOT NOIR 2020

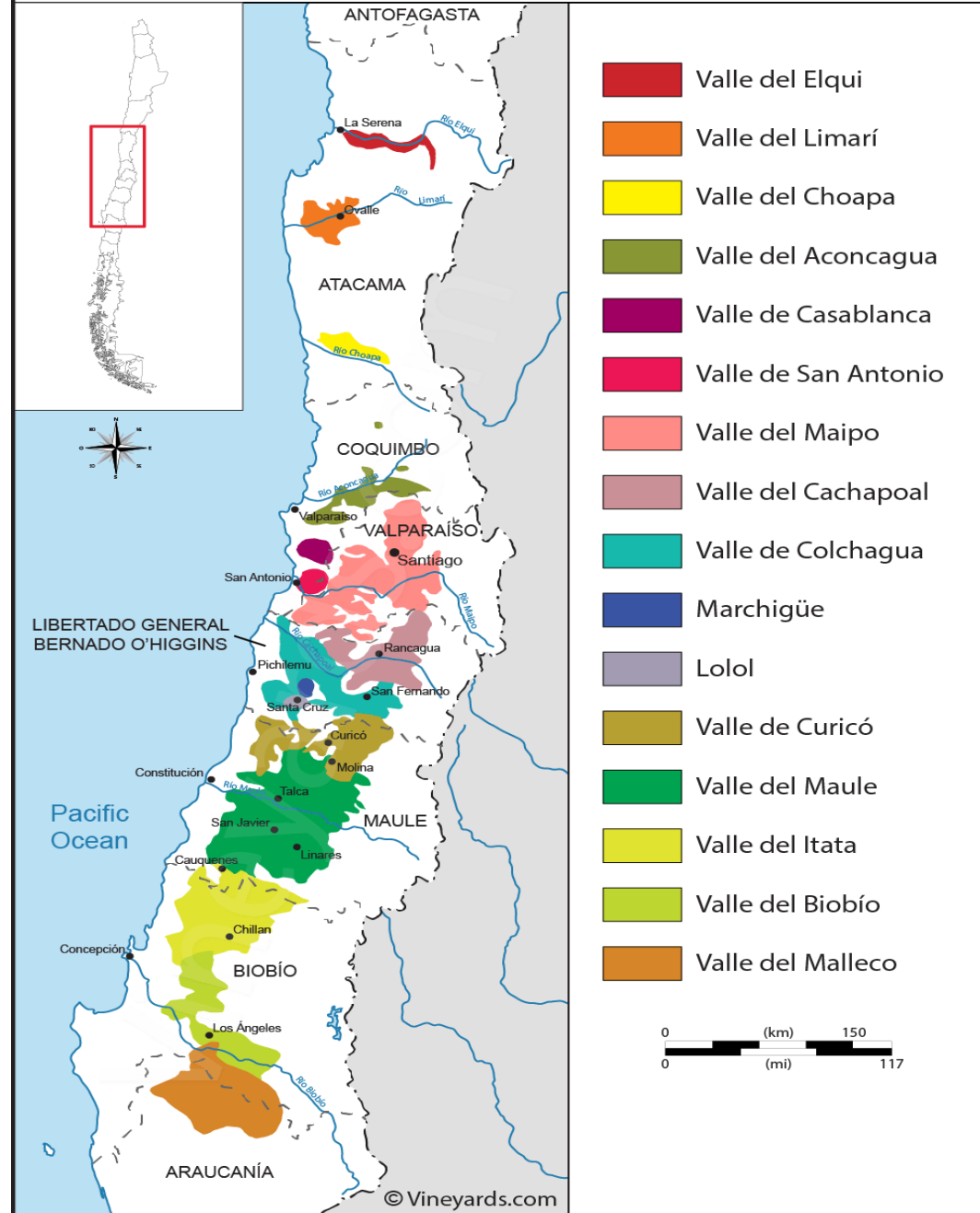
## CRAMELE RECAS, ROMANIA

- HOT SUMMERS & COLD WINTERS
- MACHINE HARVESTED
- COOL FERMENTATION
- 2 MONTHS WITH FRENCH OAK STAVES
- Aimed at SUPER MARKET BUYERS
- **Launched by Philip Cox in 1998**
- **Now Biggest Exporter of Bottled Wine in Romania**
- **1100 Hectares – 15 Million Bottles pa.**

# **PINOT NOIR CHARACTERISTICS - SUMMARY**

- Tends to **LIGHTLY COLOURED, MEDIUM BODIED & LOW TANNIN**
- **TRANSLUCIENT - CHERRY/RUBY RED + TINGES of PURPLE**
- **YOUNG – aromas of CHERRIES, RASBERRIES & STRAWBERRIES**
- **OLDER – less RED FRUIT**  
+ plus added **VEGETAL, BARNYARD & FOREST FLOOR** aromas  
+ giving added **COMPLEXITY**
- **NEW WORLD – can be FULLER BODIED & DARKER**
  
- **Growing volume of Rose Pinot Noir**

# Chilean wine regions







**PINOT NOIR**

2020

12.5%

- ***VALLE FRIO WINES***
- **AURORA VALLEY, MAULE VALLEY, Chile**
- **300 km south of Santiago**
- **Moist Warm but Dry Summers.**
- **Cooled by ocean / mountain breezes**
- **100% PINOT NOIR**
- **Young, 24 year old vines plus some additions**
- **Easy drinking young style**

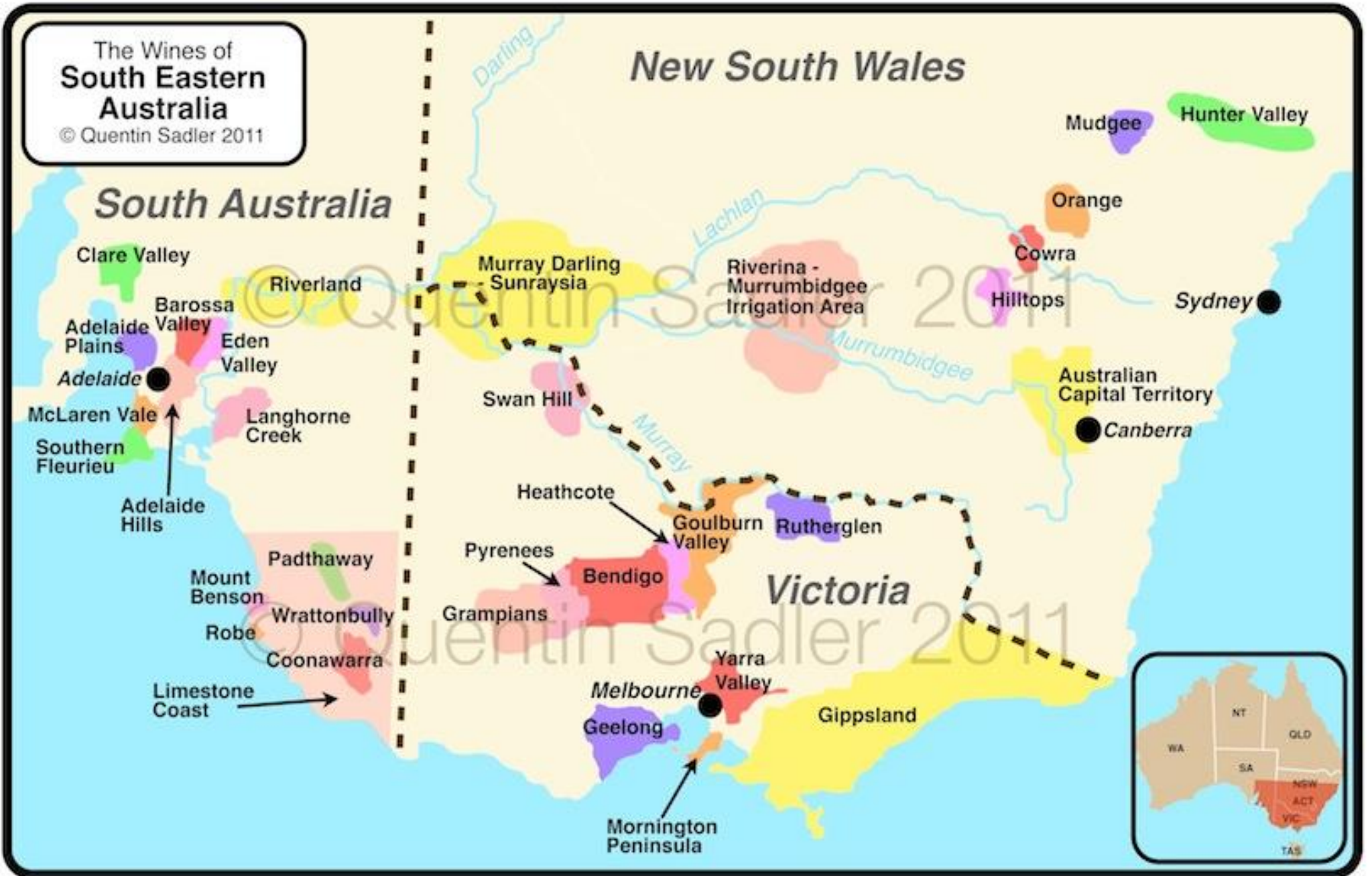
# QUOTES

**Joel Fleischman of *Vanity Fair* describes pinot noir as:**

**“The most romantic of wines, with so voluptuous a perfume, so sweet an edge, and so powerful a punch that, like falling in love, they make the blood run hot and the soul wax embarrassingly poetic.”**

The Wines of  
**South Eastern  
Australia**

© Quentin Sadler 2011

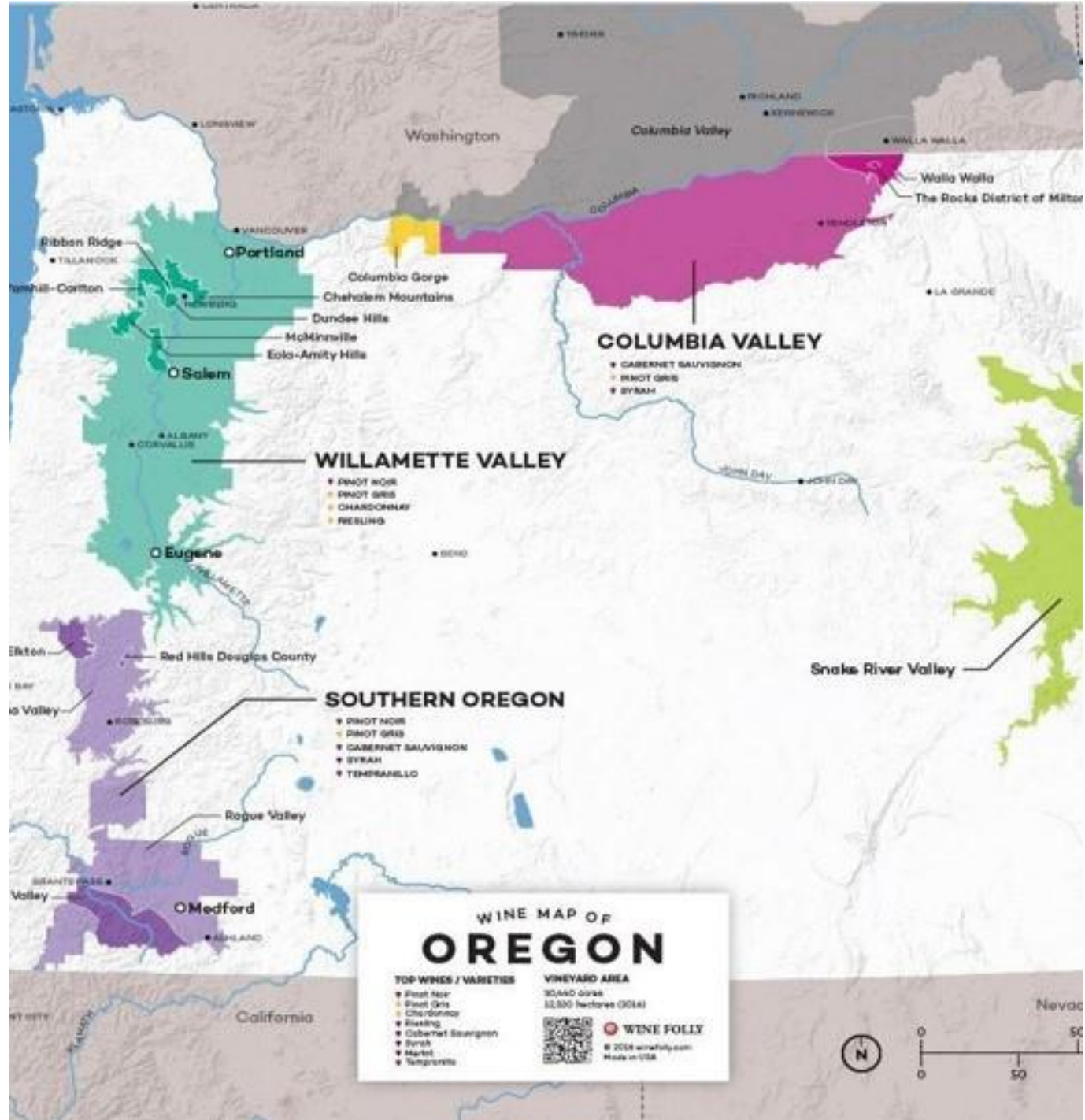


# WAKEFIELD WINES

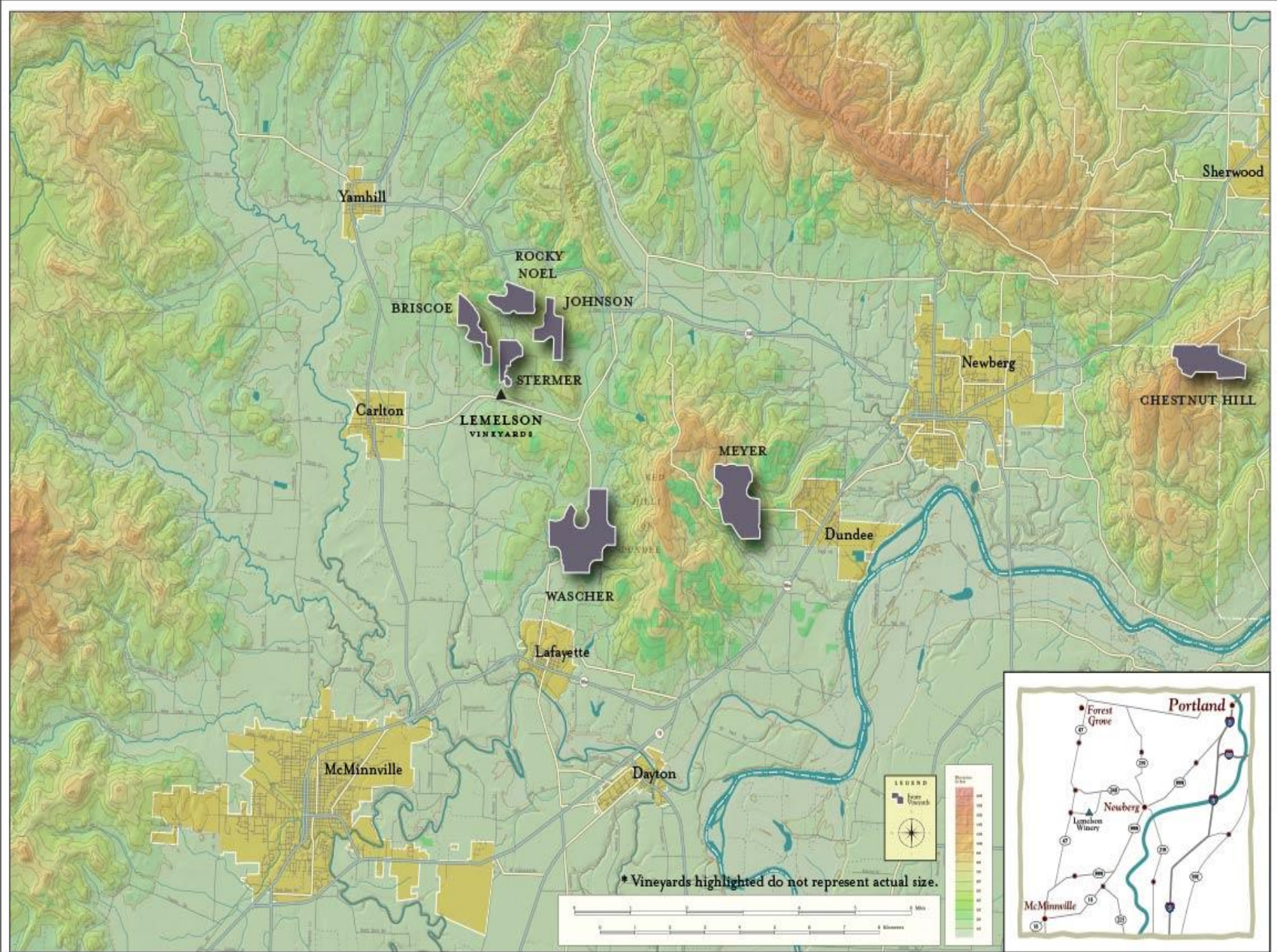
- Producer known as **TAYLORS WINES** in Australia
- A Founder Member of  
'AUSTRALIA'S FIRST FAMILIES of WINE'
- Late 1950s - WINE MERCHANT in CLARE VALLEY
- With CLARE VALLEY Coop. makes Chateaux Clare Wines
- 1969 BILL TAYLOR Buys Land next to WAKEFIELD RIVER
- 3<sup>rd</sup> Generation MITCHELL TAYLOR WINEMAKER & MD

# **WAKEFIELD PINOT NOIR 2021**

- **ONE of the ESTATE LABEL RANGE**
- **PINOT NOIR VINES are GROWN in ADELAIDE HILLS**
- **WINEMAKING in their CLARE VALLEY WINERY**
- **MATURED for 9 MONTHS in 1 and 2 YEAR OLD FRENCH HOGSHEAD – 245 litres**
- **LAYERED FLAVOURS of CHERRY, SPICE and PLUM**
- **Made for EARLY DRINKING**







# **THEA'S SELECTION 2018 LEMELSON VINEYARDS**

- **7 ORGANIC Vineyards in Northern WILLAMETTE VALLEY, OREGON**
- **3 Different AVAs – American Viticultural Area**
- **Planted 1995. First Vintage 1999 – released October 2001**
- **ORGANIC GRAPES and GRAVITY FLOW WINERY**
- **Mostly destemmed plus a Proportion of WHOLE BUNCHES**
- **30 Days on SKINS with Indigenous Yeasts**
- **7 + separate vineyard wines blended**
- **15 MONTHS IN FRENCH OAK – 30% New & 70% Previous Filled**



# QUOTES

Master Sommelier Madeline Triffon calls Pinot:

“Sex in a glass”.

JAMES HALLIDAY

- March 2020

Here I am in splendid isolation – well, not really splendid. So, the best vaccine is surely pinot noir, the wine they drink in heaven.

Pinot noir has many wonderful attributes, one that stands out is its ability to drink inordinately well from the moment it is bottled. Sure, it may well become more bewitching with age, but its vibrancy and purity are at their peak now.

Thus, most of these wines have a drink to date of 2030, but will flourish for another five years thereafter.

James Halliday

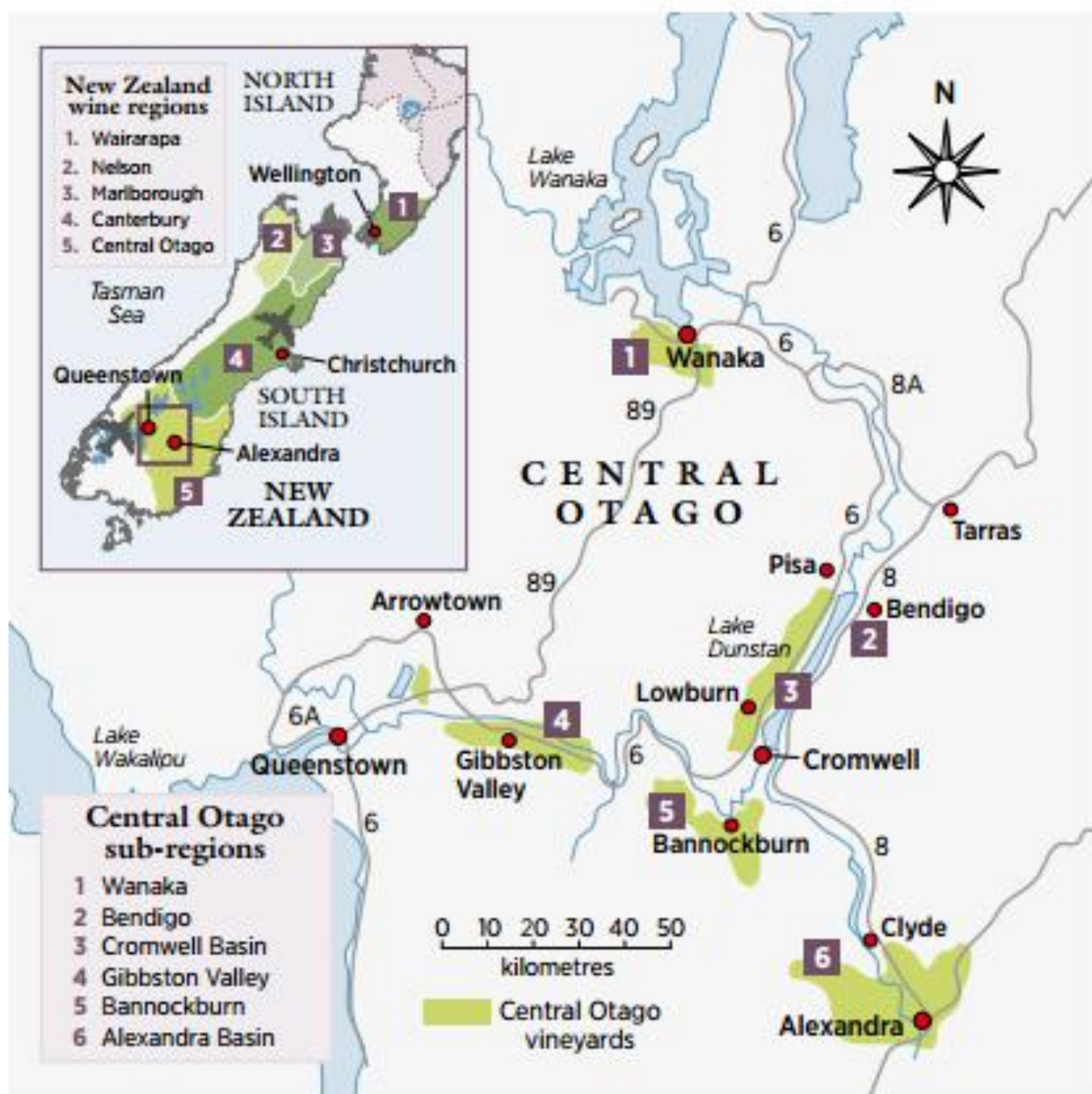
- March 2020

Here I am in splendid isolation – well, not really splendid. So, the best vaccine is surely pinot noir, the wine they drink in heaven. Pinot noir has many wonderful attributes, one that stands out is its ability to drink inordinately well from the moment it is bottled. Sure, it may well become more bewitching with age, but its vibrancy and purity are at their peak now. Thus, most of these wines have a drink to date of 2030, but will flourish for another five years thereafter.

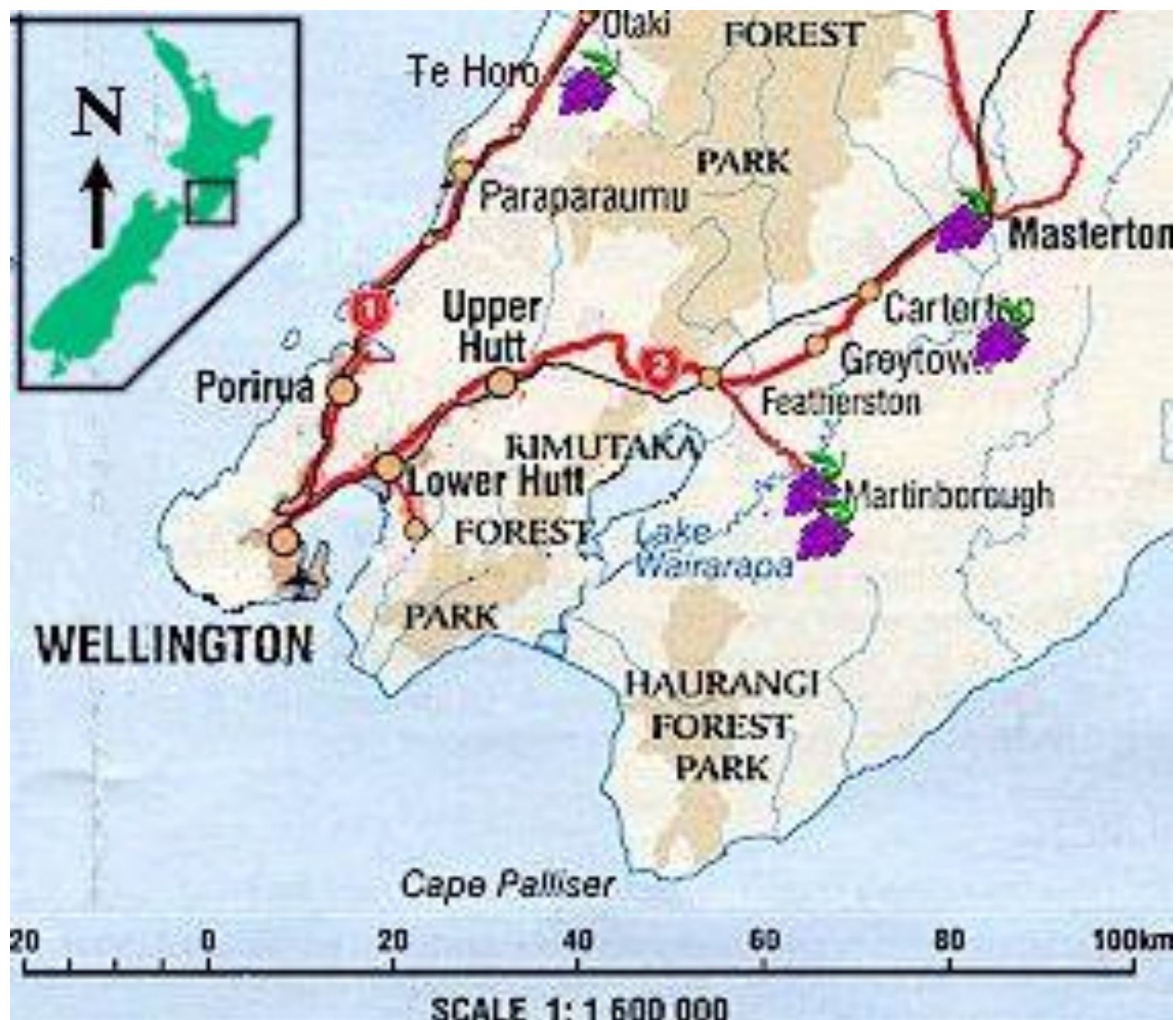
**Of course, there is still the eternal question for each of you to answer:**

***Do you look for complexity, and value it more than the freshness of youth, or vice versa?***

**It is a personal decision, and neither I nor any other expert can answer it.**









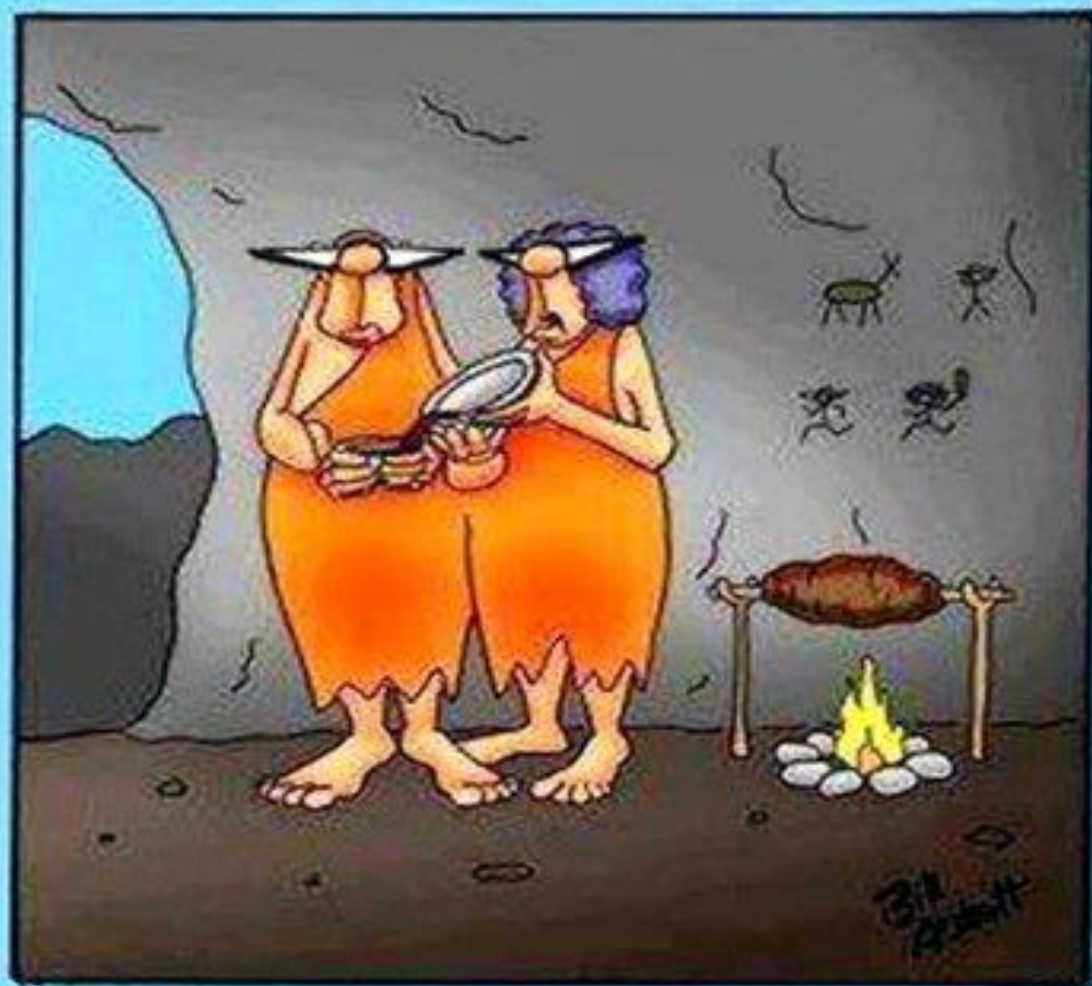


# **PINOT NOIR 2018 TE MUNA ROAD VINEYARD CRAGGY RANGE, MARTINBOROUGH**

- **WARM, DRY, EXCELLENT VINTAGE**
- **HANDPICKED from HIGHER TERRACES**
- **45 ha/hl YIELD**
- **15% WHOLE BUNCH PRESSING**
- **85% DE-STEMMED**
- **INDEGENIOUS YEASTS**
- **FRENCH OAK CUVES + OPEN TOP STAINLESS TANKS**



## WINE PAIRING IN THE STONE AGE



“Simple rule of thumb; if it tries to eat us, serve with red. If it runs away from us, serve with white.”





# **WILD EARTH 2017 BANNOCKBURN, CENTRAL OTAGO**

- **SINGLE VINEYARD WINE**
- **2017 COOLER GROWING SEASON – SPRING FROSTS**
- **Produces SMALLER BUNCHES**
- **HAND HARVESTED in BANNOCKBURN in April from 4 vineyards**
- **EIGHT FERMENTERS 0-50% WHOLE BUNCH PRESS – Average 21%**
- **18 to 28 DAYS on SKINS**
- **FRENCH OAK – 22% New, 33% 1 Year, 45% 2-5 Years for 12 Months**
- **Silver IWC, Gold Premium NZ, 4.5 Stars Winestate**

# VOLNAY

## Volnay

- Premiers Crus
- Appellation Volnay



**Les ROBARDELLES 2019 AC VOLNAY VILLAGE**  
**DOMAINE HUBER-VERDEREAU 13%**

- **BIODYMANIQUE since 2005**
- **74 YEAR OLD VINES – ‘Actually 1er CRU’**
- **HAND HARVESTED into 50 ltr. boxes**
- **Pre-Fermentation COLD MACERATION for 3 days**
- **Alcoholic Fermentation without punching down for 8 days**
- **Duration of vatting - 22 days.**
- **AGED in BARRELS for 14 MONTHS - 20% New**



# Argentina's Wine Regions



Wines of Argentina

www.winesofargentina.org  
info@winesofargentina.org







# **SAURUS PINOT NOIR TARDIO 2019 15%**

- **SAN PATRICO del CHANA, PATAGONIA - 39<sup>TH</sup>. SOUTH**
- **DRY WEATHER, WINDY, COOL NIGHTS, LONG SUMMER DAYS**
- **MANUAL HARVESTED in last Week of APRIL**
- **VERY DEHYDRATED & CONCENTRATED - RAISINED**
- **FERMENTED with BAYANUS Yeast – High Alcohol Resistant**
- **Low temperature for 7 days – submerged hat**
- **7 more days maceration. Then 6 months in stainless tanks**

# PRICES of our PINOT NOIRS

£s

• Bird in Hand Sparkling Rose , Adelaide Hills	2022	16.49	
• Waitrose Blanc de Noirs, Aude, France	NV	26.99	
• Incanta, Cramele Recas, Romania	2020	7.99	
• Valle Frio, Maule Valley, Chile	2020	9.25	
• Wakefield (Taylors) Adelaide Hills, Australia	2021	16.00	
• Lemelson Vineyards, Oregon, USA	2018	20.50	
• Craggy Range, Martinborough, NZ	2018	23.00	
• Wild Earth, Central Otago, NZ	2017	23.00	
• Les Robardelles, Huber-Verdereau, Burgundy	2019	45.00	
• Saurus Tardio, Patagonia, Argentina	2020	21.50	50cl

# GOOD VALUE PINOT NOIRS

- **Paparuda E. S, Cramele Recas, Romania** £7.50 Tanners
- **PN, Valle Frio Wines, Chile** £9.25 Stone V & S
- **Errazuriz Cuvee Aconcagua PN, Chile** £11.00 Tesco
- **Bird in Hand, NV Sparkling **Rose**, Australia** £16.49 Waitrose
- **Marisco, King's Wrath PN, Marlborough, NZ** £15.99 Majestic
- **Incanta PN, Romania** £7.99 Majestic
- **Matetic, Estela PN, Casablanca Valley, Chile** £12.00 M&S
- **Parker Station Santa Barbara PN, USA** £14.95 Wine Soc.
- **The Society's Chilean PN, Leyda, Chile** £8.95 Wine Soc.
- **Wakefield PN Estate Label, Australia** £18.00 Wineryard, F



# NEW DUTY RATES – August 2023 - 75cl bottle

Class	% ABV	New Rate	Old Rate £	Delta £	%
Still Wine	11.5% - 14.5%	£2.67	£2.23	+£0.44	+20%
Sparkling Wine	11.5% - 14.5%	£2.67	£2.86	-£0.19	-7%
Fortified Wine	18%	£3.85	£2.89	+£0.87	+20%
Fortified Wine	20%	£4.17	£2.89	+£1.30	+20%



# VINONOMICS

AUGUST 2023

## UK WINE PRICING UNCOVERED

TOTAL MARGIN

\*EXCISE DUTY

VAT

PACKAGING

LOGISTICS

MONEY FOR WINE



\*Excise duty as per the median ABV of a bottle of wine at 12.5%.

All figures are indicative, based on a "typical" bottle of wine and do not include CCT. In reality margins, packaging and logistics differ depending on the businesses and products involved, but the overall picture will still be the same. \*Average cost 75cl Still Wine, IRI, Total Market, data 12wks to 22.01.23.

POWERED BY **PROOF**

**SO ----**

- **A TRICKY GRAPE TO GROW WELL**
- **MORE RISKS THAN MANY**
- **AGE VS YOUTH**

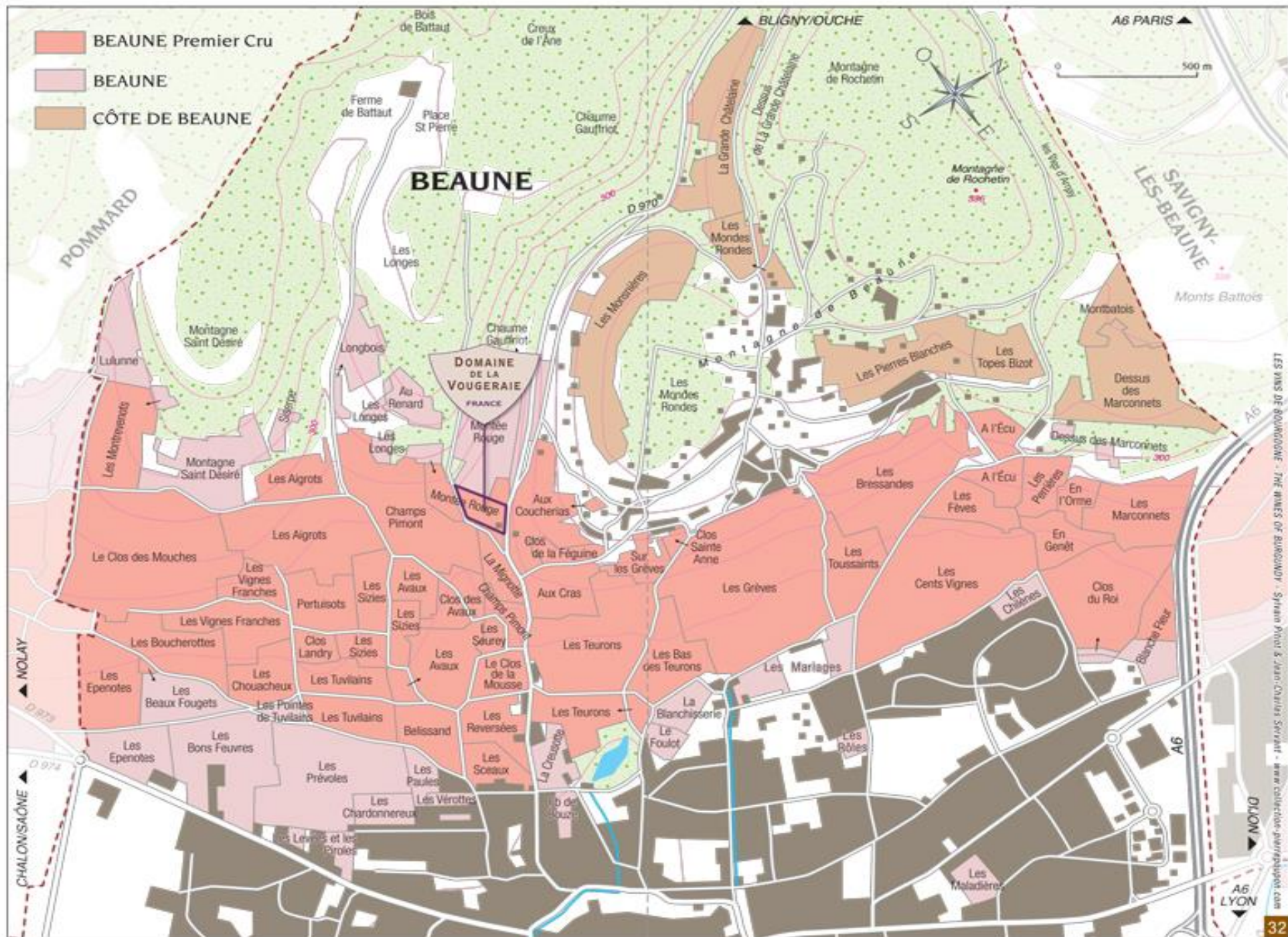
**SO -----**

- **A TRICKY GRAPE TO GROW WELL**
- **MORE RISKS THAN MANY**
- **AGE vs YOUTH**

**However:**

- **ENTICING**
- **HAUNGTINGLY BEAUTIFUL and ADDICTIVE**
- **SEX IN A GLASS ? – ONLY YOU CAN TELL**





# **'LES GREVES' 2005 1er. CRU BEAUNE DOMAINE MAILLARD PERE et FILS**

- **2005 ONE of the VERY BEST VINTAGES in last 50 years**
- **LES GREVES – 'LE FILET MIGNON' of BEAUNE**
- **CREATED in 1952 – 19 HECTARES**
- **HAND HARVESTED**
- **HAND SORTING GRAPE SELECTION - BOTRYTIS REMOVAL**
- **FERMENTATION – 18 DAYS – 1/2 PUNCHED DOWNS per DAY**
- **FRENCH BARRIQUE for 18 MONTHS - 40% NEW**
- **'Les Greves' - Longest Lived Wines in the Beaune Appellation**

# **THE EYRIE VINEYARD**

**2015**

## **DUNDEE HILLS, WILLAMETTE VALLEY, OREGON**

- **DAVID LETT PIONEERED WINERIES HERE IN 1965 – 1<sup>st</sup> Pinots**
- **BLEND OF PLOTS – 70 % OWN ORGANIC + 4 OLD VINE ORGANIC SITES**
- **HAND PICKED, BASKET PRESSED, NATURAL TEMPERATURE CONTROL**
- **VARIOUS PRIMARY FERMENTERS - 1 TON TO 5 TON**
- **2 WHOLE CLUSTER FERMENTERS = 4% of total volume**
- **NATURAL MALOLACTIC FERMENTATION**
- **10% NEW OAK – REMAINDER NEUTRAL**
- **2 YEARS IN BARREL**
- **Wine Maker – Jason Lett**



# VINONOMICS

## SPRING 2021

# UK WINE PRICING UNCOVERED



All figures are indicative, based on a "typical" bottle of wine and do not include CCT. In reality margins, packaging and logistics differ depending on the businesses and products involved, but the overall picture will still be the same. \*Average price for a bottle of wine in the UK.

